



The 4GX Live Life Mobile Alarm

Guide to using your alarm

My pendant alarm phone number:



Call LiveLife on 1800 936 774 for any questions about your alarm



Visit the LiveLife website for instructional videos on how to use your alarm www.livelifealarms.com.au/videos

Table of Contents

What is included in the packaging?	3
Features of the alarm.....	4
How to set up your alarm	5
How to charge your alarm.....	7
How to use the alarm.....	10
Bed time use of alarm.....	13
Other features and considerations	13
Information for Emergency Contacts.....	14

What is included in the packaging?

Live Life Alarm



Lanyard



Wristband



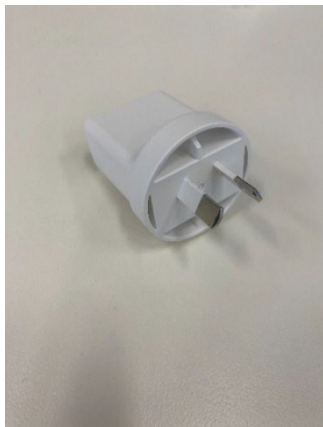
Belt Clip



Charging Station



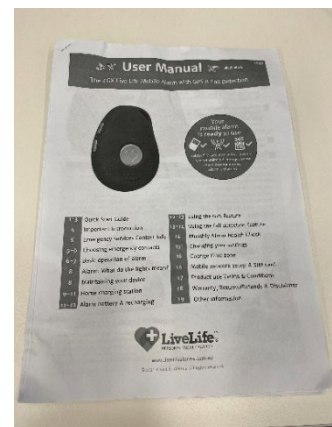
Power adapter



USB Cable

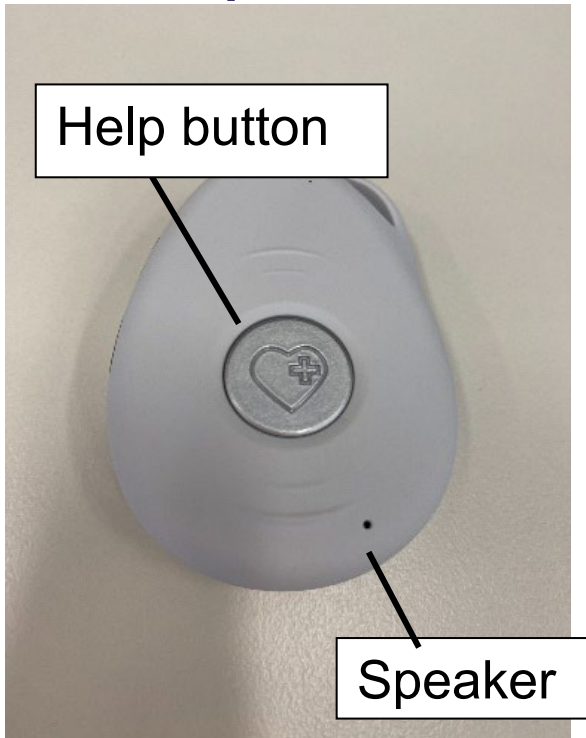


User Manual



Features of the alarm

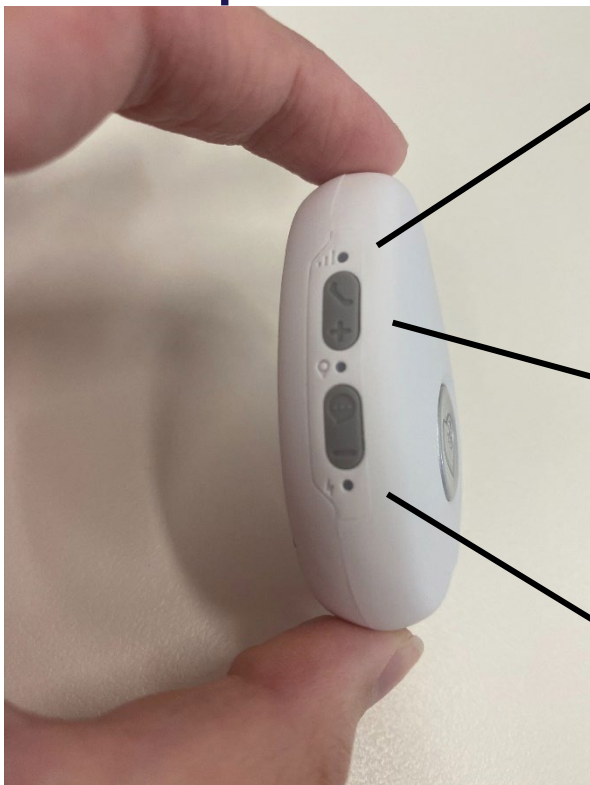
Front of pendant



Back of pendant



Side of pendant



Mobile connection indicator
Will flash green to show the alarm is connected

On button
Hold down to turn your alarm on

Battery light
Will flash red if low on battery

How to set up your alarm

Step 1 Remove Live Life alarm from the base of the box

Step 2 Connect alarm to the lanyard, wristband or belt clip

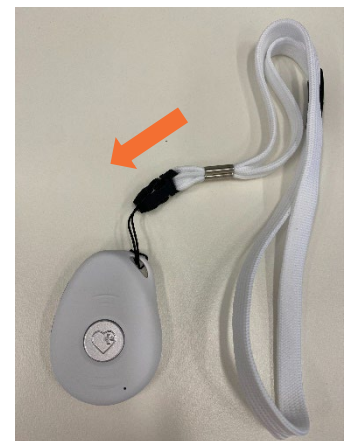
If using the lanyard



Loop the string through the lanyard hole



Loop the plastic part through the loop and tie



Clip the lanyard onto the plastic part

If using the wristband



Push the alarm through the wristband hole to attach

If using the belt clip



Push the alarm into the belt clip to attach

Slide silver part onto belt or pants to wear

Step 3 Charge the alarm

The alarm will automatically turn on when charged


How to charge your alarm




Details about charging

- When charging, you should hear the alarm say “Your mobile alarm is charging” when plugged in
- You can leave the alarm on the charging station for as long as you like
- It is recommended to place your charging station by your bedside table and charge the alarm every night
- Usually takes 20-30 mins to fully charge
- When the battery reaches 20% alarm will say “Battery is low please recharge your battery”

There are 2 ways that you can charge your Live Life Alarm

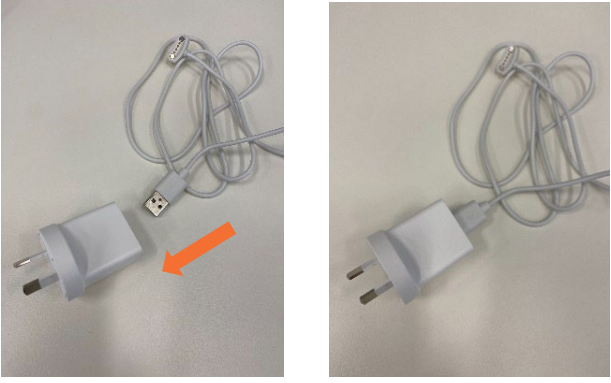


Option 1: Use the charging station

Step 1	Unwind the cord from the base of the charging station.	
---------------	--	--

Step 2	Connect the cord to the power adapter.	
Step 3	Plug the power adapter into the wall socket.	
Step 4	Place the alarm into the charging station.	

Option 2: Use the magnetic USB cable

This option is recommended if you will be travelling or staying somewhere other than your home

<p>Step 1</p>	<p>Connect the USB end of the cable to the power adapter</p>	
<p>Step 2</p>	<p>Plug the power adapter into the wall socket</p>	
<p>Step 3</p>	<p>Click the magnetic end of the power cord onto the back of the alarm</p>	

How to use the alarm

Completing a test run

- It is recommended to complete a test run of using your alarm when you first receive it
- Contact the people you have decided to save into your alarm to let them know that you are running a test

Step 1 Press the button for help



Press this button

- Hold down for 3-4 seconds until you feel a vibration
- The pendant will announce that the SOS has been activated

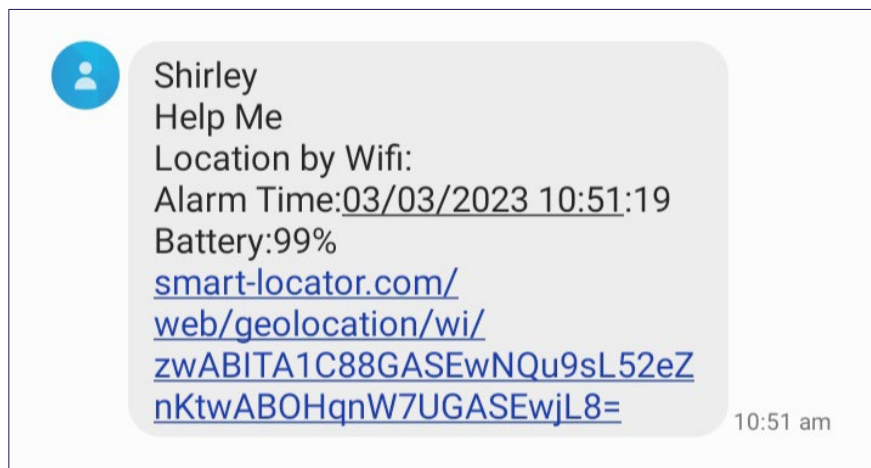
To cancel the SOS call

Quick press of the button again

Step 2 Wait for the alarm to ring your saved contacts

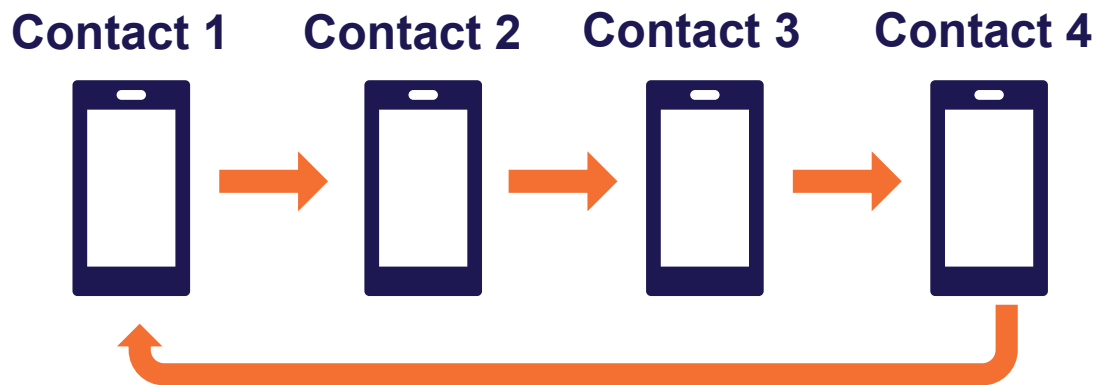
1. The alarm will send a text message to all your saved contacts showing the GPS location of the pendant

This is an example of the text message your contacts will receive:



2. The alarm will then initiate a help call sequence

- The alarm will ring your first contact number
- If this person doesn't answer the call, the alarm will ring the next number and this sequence continues
- The alarm will speak to you at all stages. For example, it will say "Calling contact 1"
- The call sequence will loop through 2 times



Step 3 Speak into the alarm

- Once your contact has answered your call speak directly into the alarm
- The device operates like a loudspeaker on a phone. You don't have to hold the device to your mouth but can hold it arms distance away from your mouth.
- Each call will last 3 minutes
 - The emergency contact can call the device back if the conversation needs to be extended past 3 minutes.

Step 4 End the call sequence

- Click the SOS button to end the call sequence after you have spoken to your contact or;
- The person you were talking to can press the number 1 key on their phone

Bed time use of alarm

- It is recommended to charge your alarm overnight or leave it on the side table next to your bed.
- Do not wear the alarm in bed as moving around in bed can activate the pendant.
- If getting up in the night, you should take the alarm with you in case of falls.

Other features and considerations

Calls to the pendant alarm

- If your contacts were to miss the call from your alarm, they are able to call it
- The alarm has a phone number which your contacts can call to get in contact with you immediately

Automatic falls detection

- The falls detection feature is activated on impact when no movement is detected within 20 seconds of a fall
- The alarm will initiate the call sequence for your contacts without having to press the SOS button

- Falls detection is emerging technology and the automatic falls detector can go off when not intended to, or not go off when needed. The user should always press the SOS button if able to

Creating an action plan

- If you were to become unconscious after a fall, although the falls detection feature would ring your contacts, you would not be able to speak to them
- It is important to create an action plan with your contacts in the event this happens. For example, your contact could use the location provided on the text alert to call an ambulance for you

Information for Emergency Contacts

Saving the personal alarm number

- When a contact received a call from the personal alarm, it will present on the screen as an unknown number
- It is recommended that all emergency contacts save the number of the personal alarm number into their phones

- When receiving a call, the contact must press 1 on their phone keypad within 30 seconds to prevent the LiveLife alarm from hanging up and dialling the next contact
- Emergency contacts can set up a group chat so they can communicate with each other when someone has spoken to the user.

Finding the location of the person wearing the personal alarm

- Family and friends can text “loc” to the pendant wearer’s device
- Once “loc” is sent to the pendant alarm mobile number, you will receive a text message with a link to the person’s GPS location
- This is an example of the text message saved contacts will receive:

